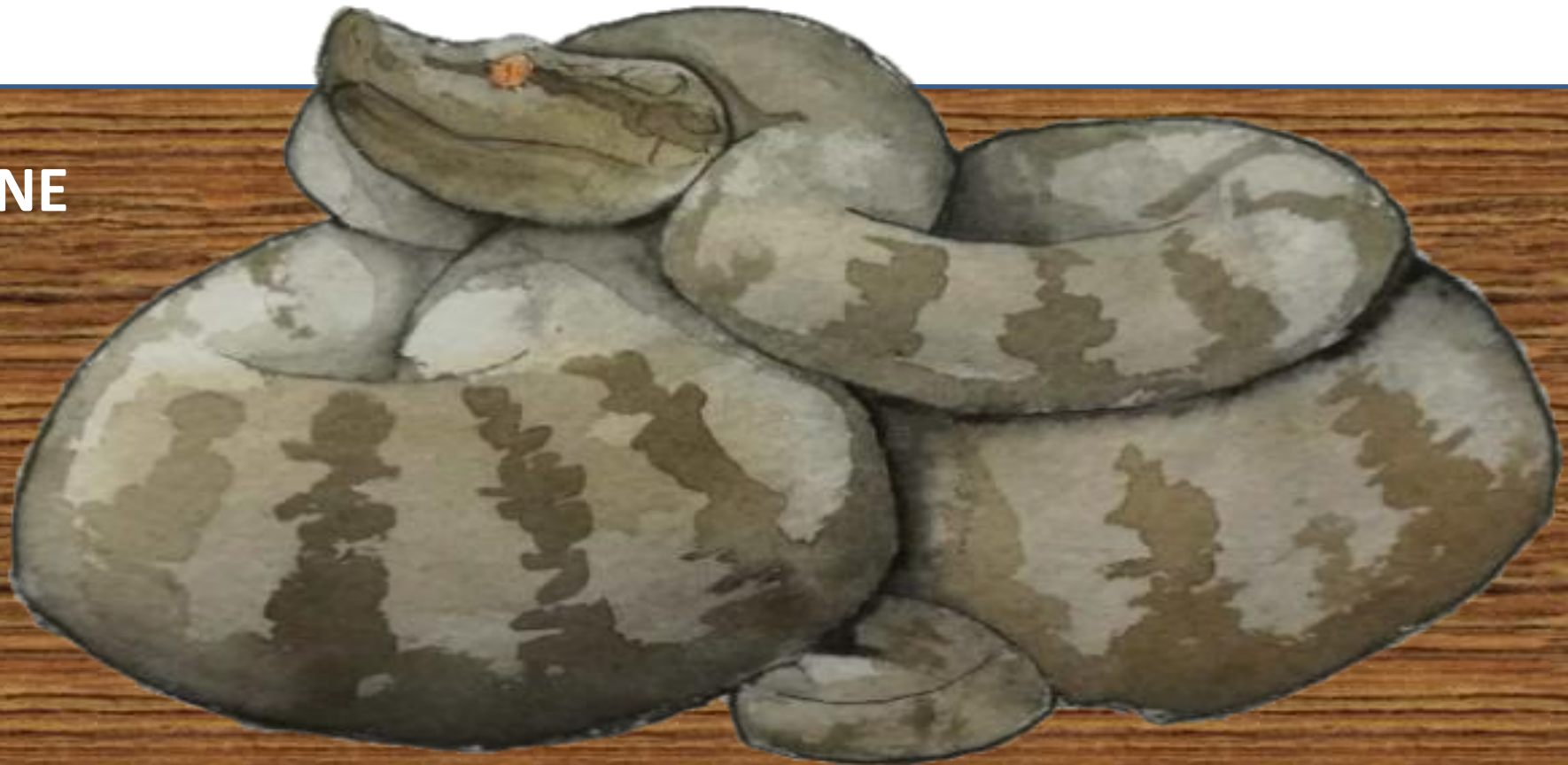


SERPENTI

NEL PARCO PINETA 1

INTRODUZIONE

LA VIPERA



I NOSTRI SERPENTI



BISCIA D'ACQUA



SAETTONE



BIACCO



COLUBRO LISCIO



VIPERA

SQUAME



Lisce



Carenate

RIPRODUZIONE



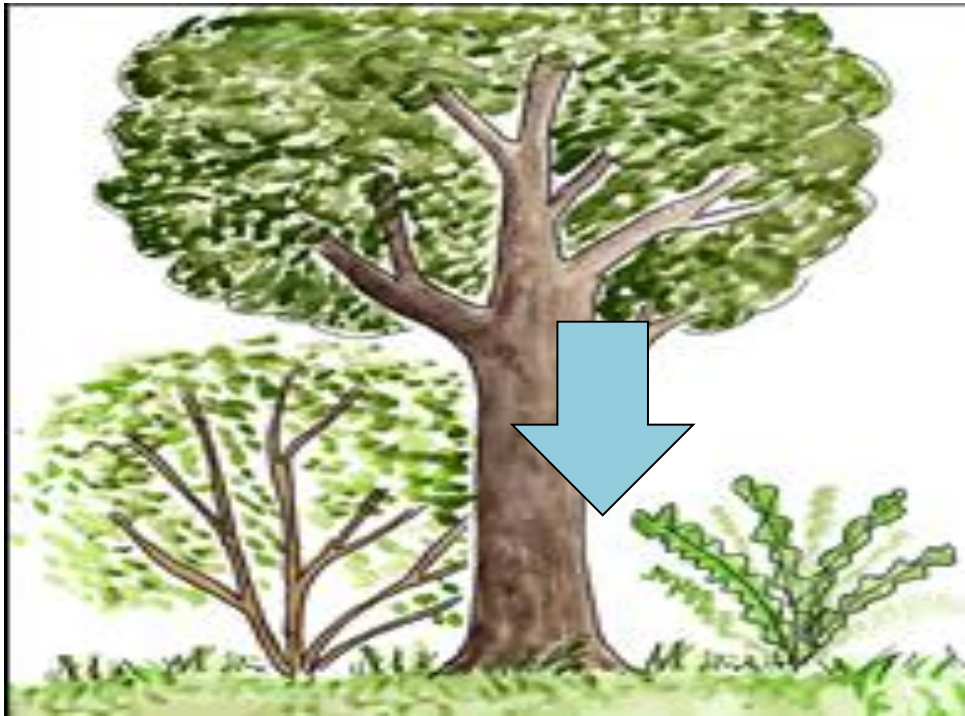
Uova



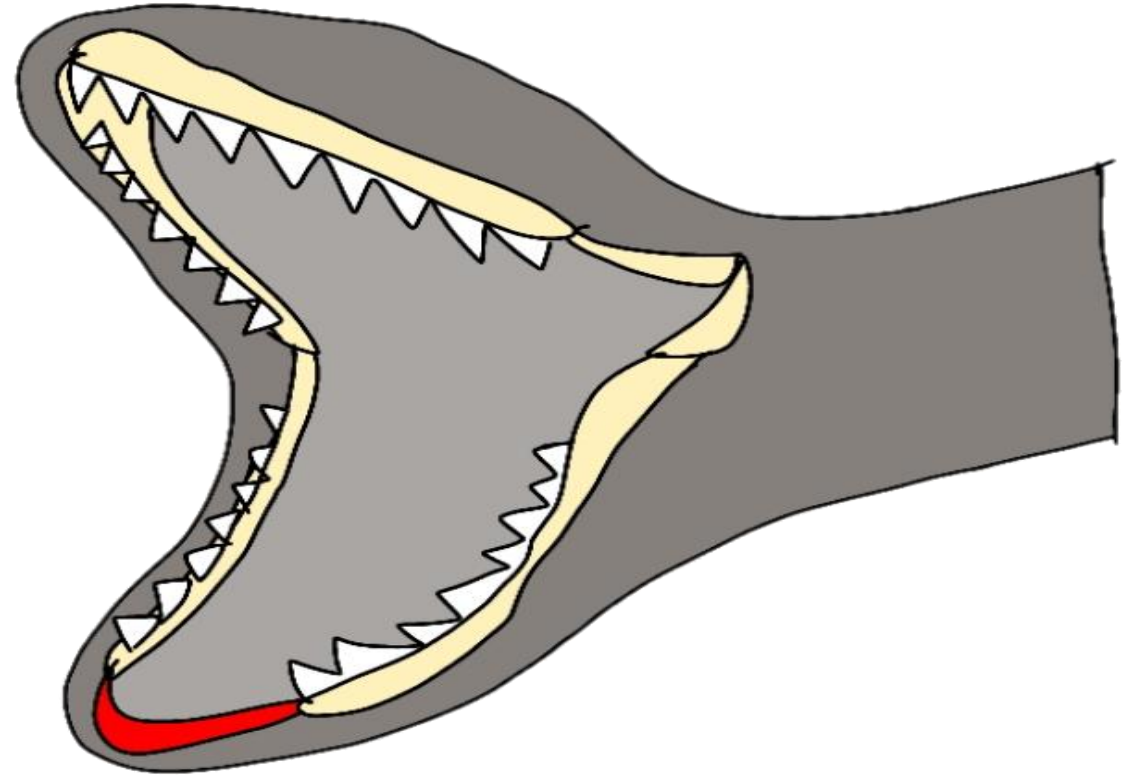
Piccoli già formati



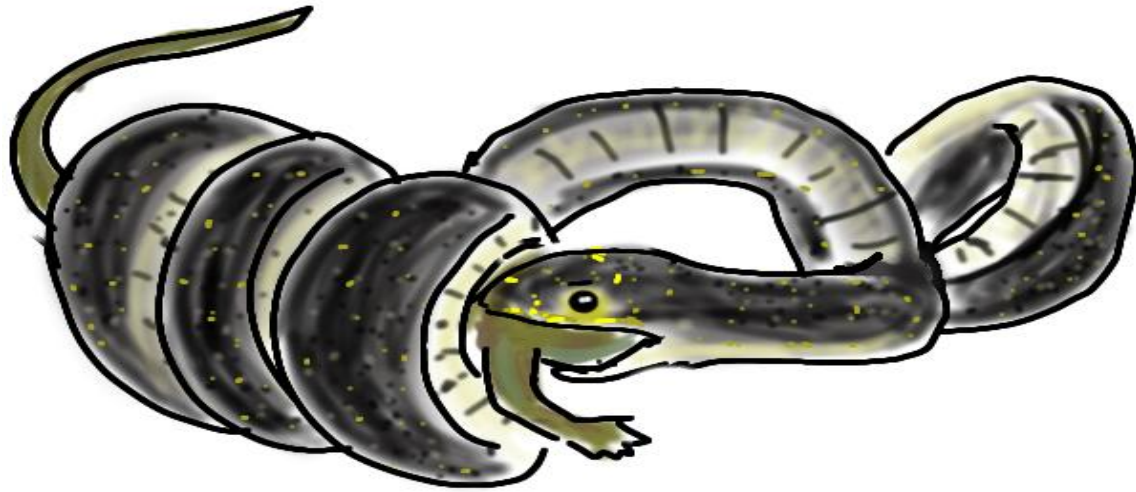
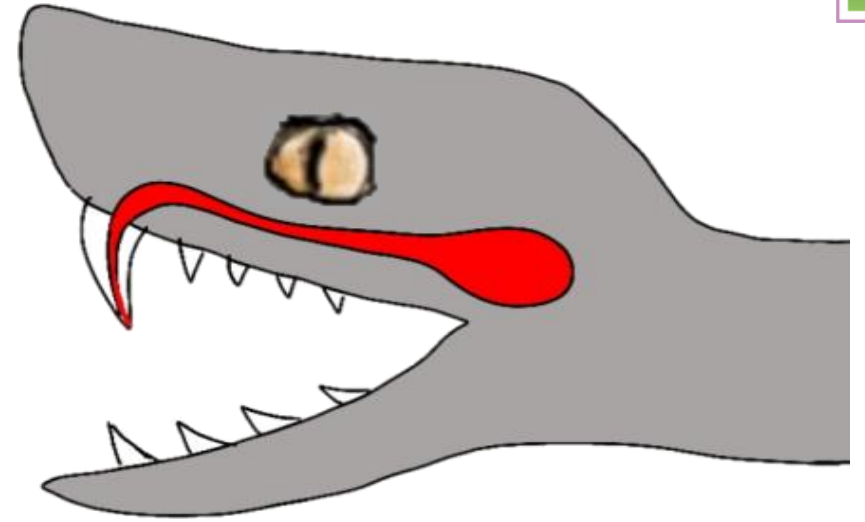
LA TERMOREGOLAZIONE NEGLI ETEROTERMI



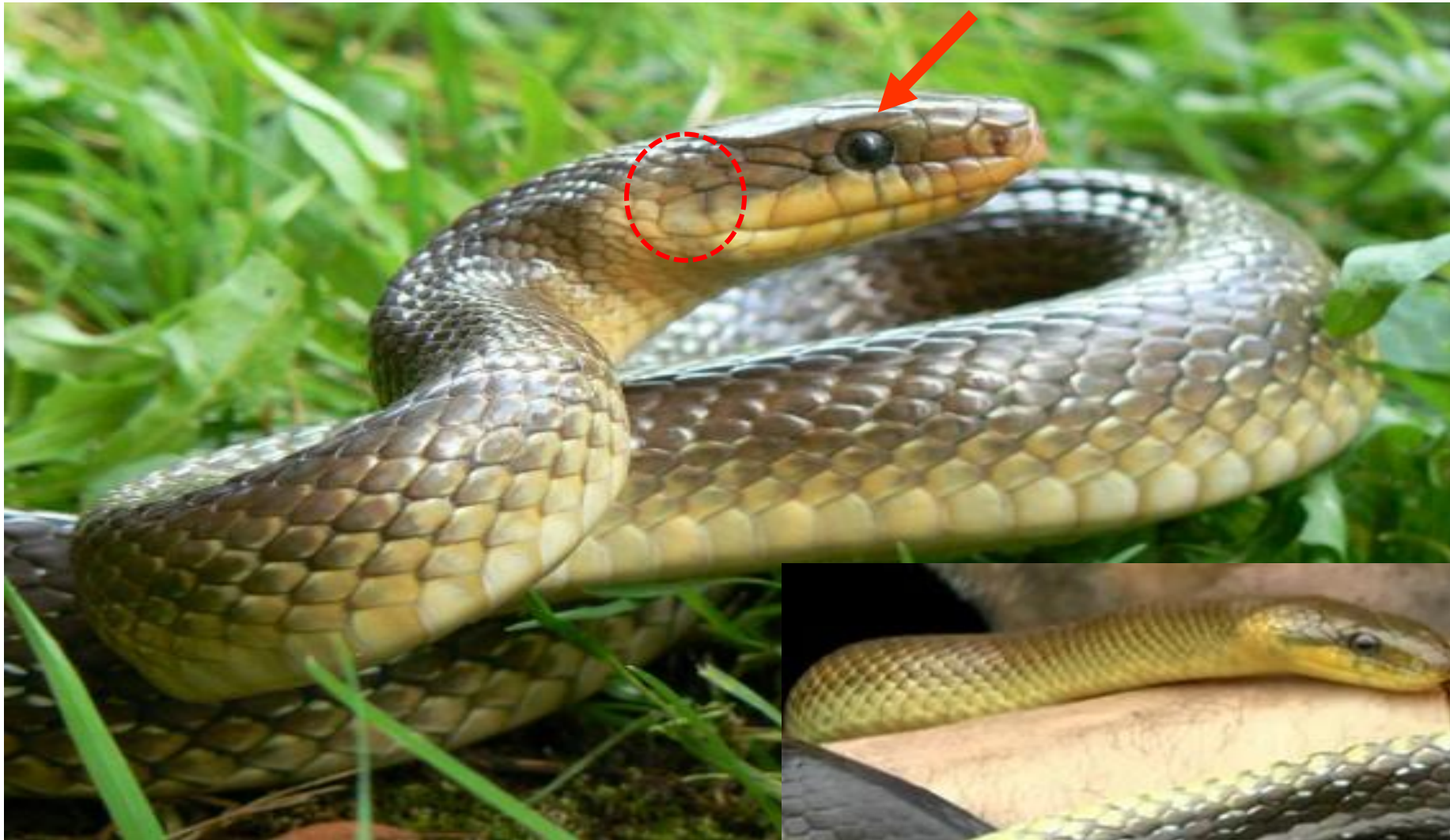
LA BOCCA DEI SERPENTI



LA CATTURA DELLA PREDA



GLI ORGANI DI SENSO:



DISTINGUERE LE VIPERE DALLE BISCE

V



B



B

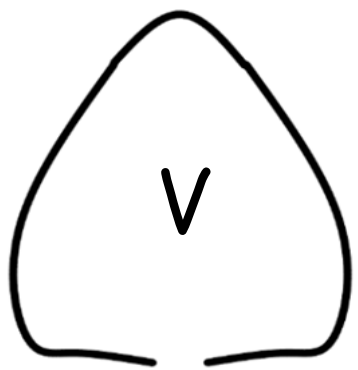
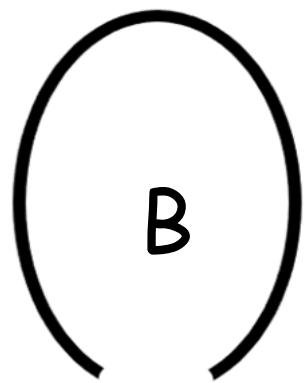


V



Vipera

Biscia

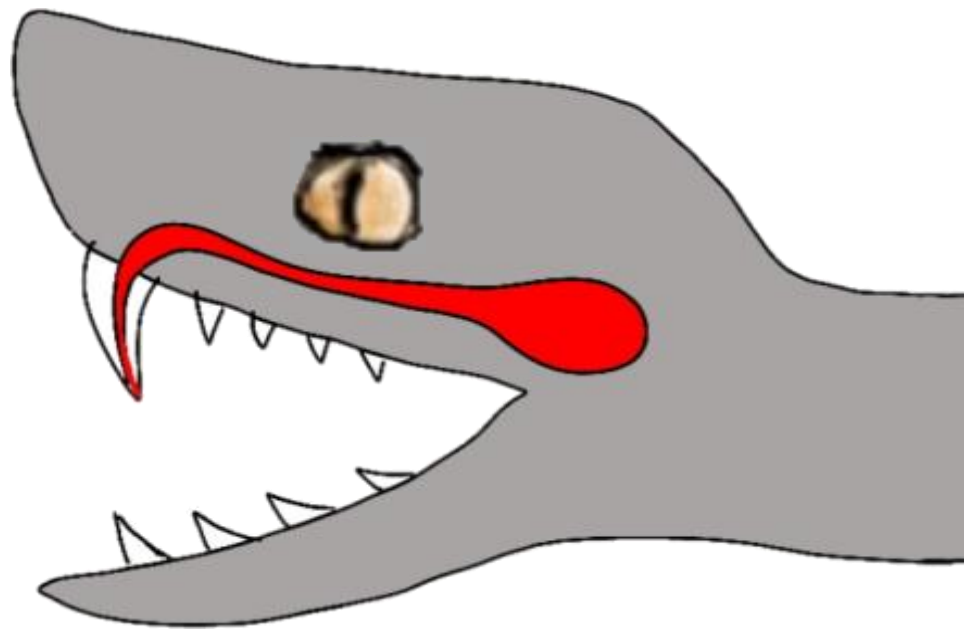


VIPERA

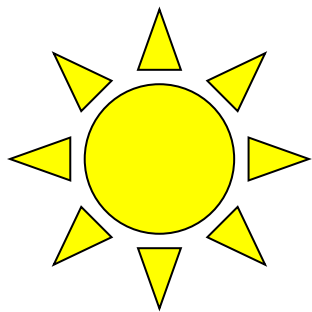
75 cm



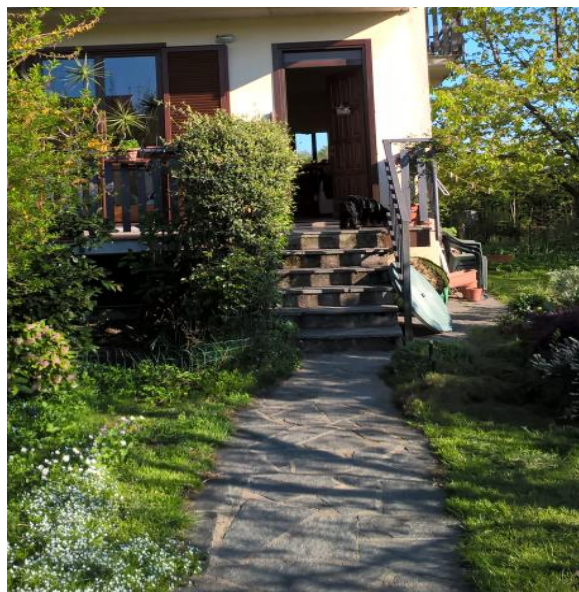
VIPERA



VIPERA



diurna



VIPERA

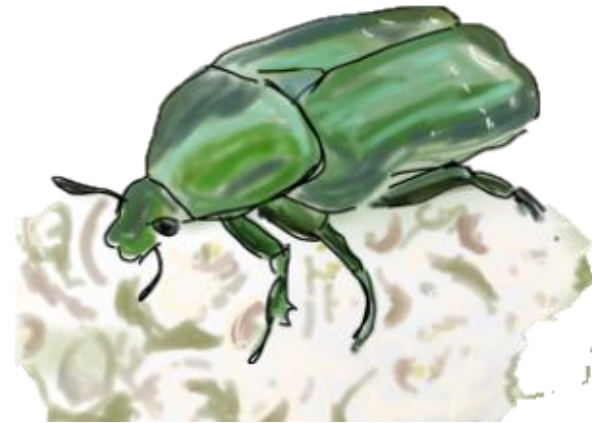


Ovovivipara (1-22 piccoli in ago-set)

VIPERA



cibo



SERPENTI

NEL PARCO PINETA 1

FOTOGRAFIE: VITTORE ARRIGONI, PAOLA CASALE, FLAMINIO SABAINO,
STEFANO SCALI E ARCHIVIO PARCO

DISEGNI: LISA BERTE', MATTIA BORDEGONI, PAOLA CASALE, FABIANA FASELI



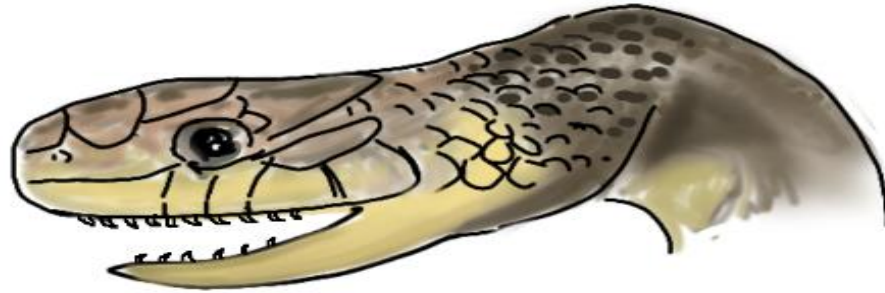
SERPENTI

NEL PARCO PINETA 2

LE BISCE



CARATTERISTICHE GENERALI



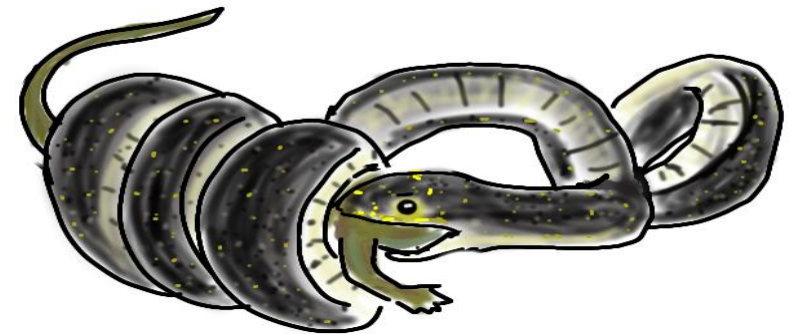
Denti uguali



Squame lisce



Pupilla rotonda



Corpo slanciato

LE NOSTRE BISCE

BISCIA D'ACQUA



COLUBRO LISCIO



BIACCO



SAETTONE

BISCIA D'ACQUA o NATRICE DAL COLLARE



110 cm (maschi)
150 cm (femmine)

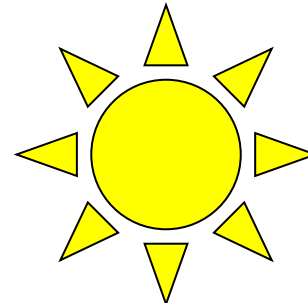


La femmine diventano più grandi

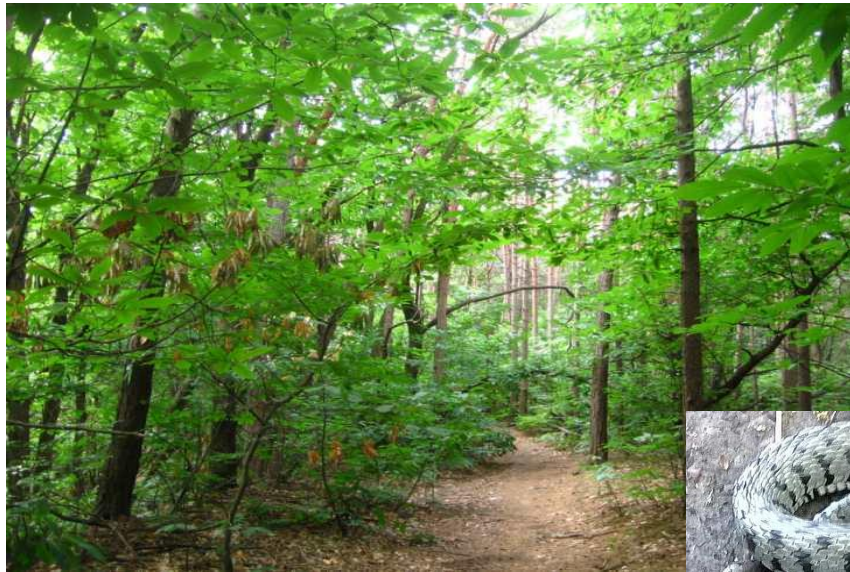
BISCIA D'ACQUA



BISCIA D'ACQUA



diurna



BISCIA D'ACQUA

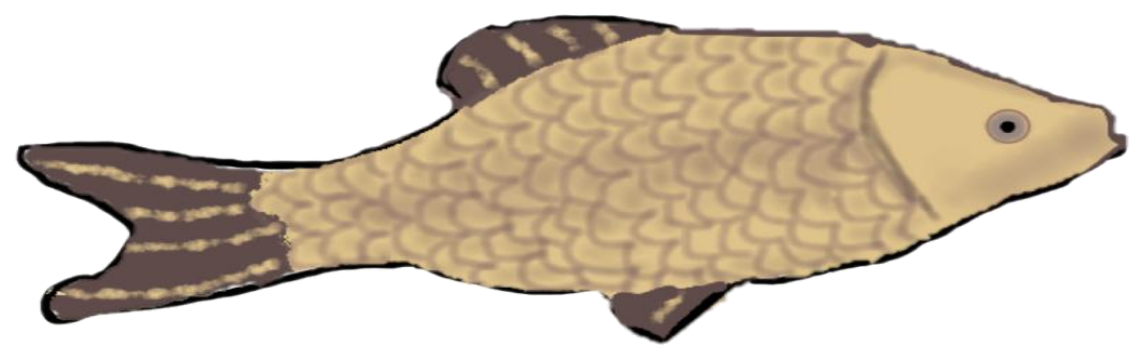
Ovipara: fino a 105 uova in giugno-agosto



BISCIA D'ACQUA



cibo





COLUBRO LISCIO

75 cm



maschio



femmina

COLUBRO LISCIO

 Crepuscolare/
notturno



COLUBRO LISCIO



Ovoviviparo: 3-15 piccoli
in agosto-settembre



cibo



Non è in grado di dilatare la bocca

BIACCO

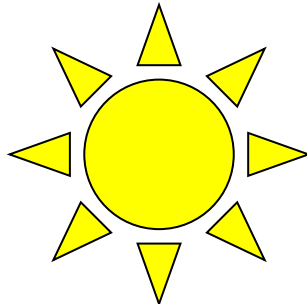


giovane

130 cm e +
←————→
(max 200 cm)



BIACCO



diurno



SERPENTI NEL PARCO 2

BIACCO

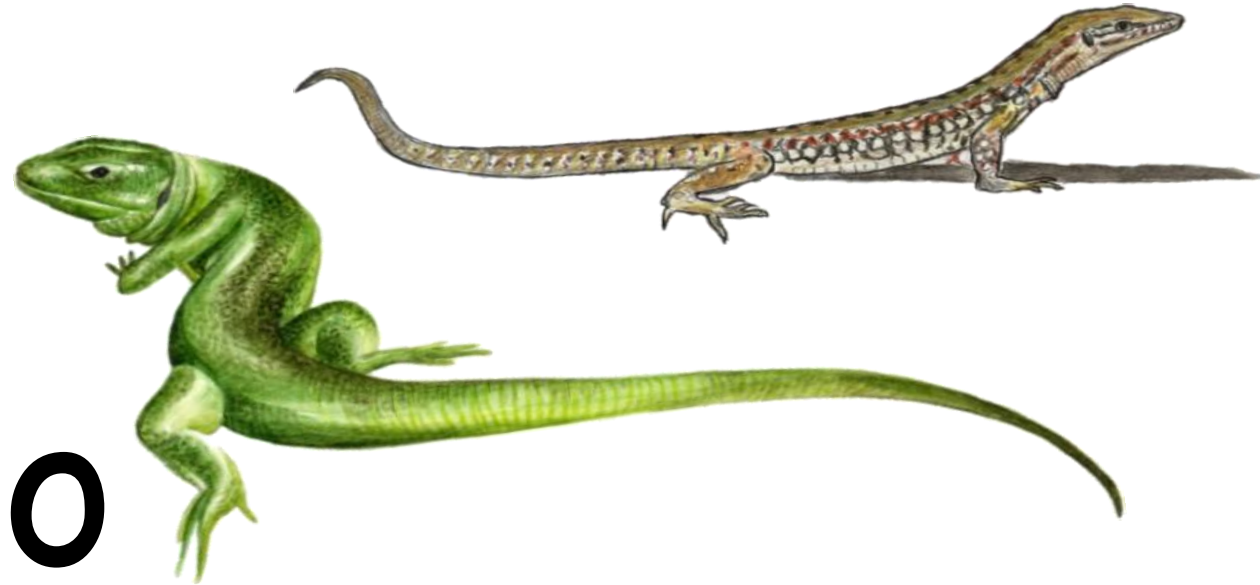


Oviparo

5-6 uova in
giugno-luglio



BIACCO



cibo



SAETTONE



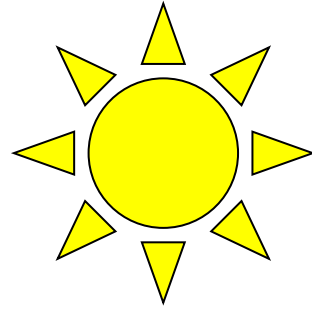
Semi arboricolo

140 cm e +

←—————→
(max 200 cm)



SAETTONE



diurno



SAETTONE



Oviparo: 6-12 uova in maggio-giugno



cibo





RETTILI



SAURI

DEL PARCO PINETA



I NOSTRI SAURI



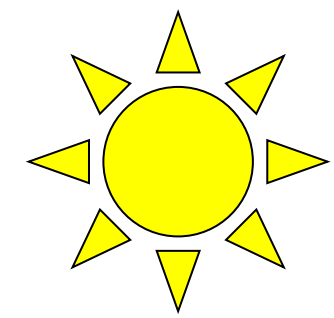
SAURI DEL PARCO PINETA

CARATTERISTICHE:



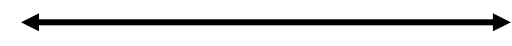
SAURI DEL PARCO PINETA

RAMARRO OCCIDENTALE



diurno

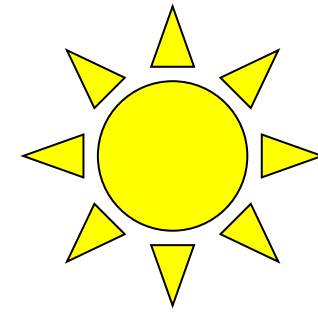
45 cm



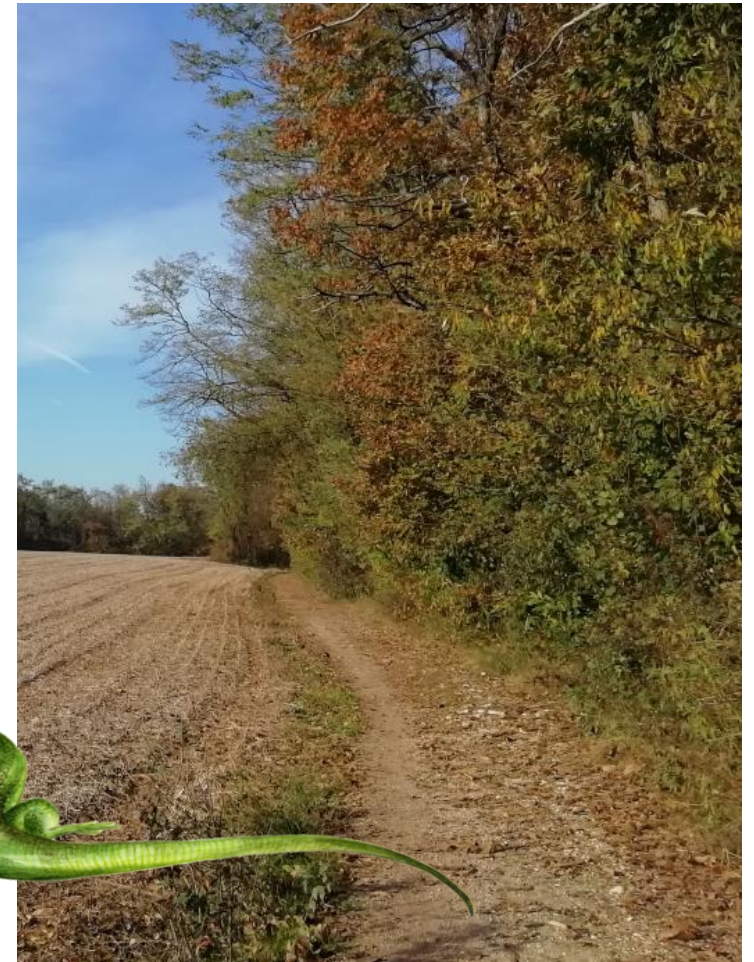
RAMARRO OCCIDENTALE



RAMARRO OCCIDENTALE

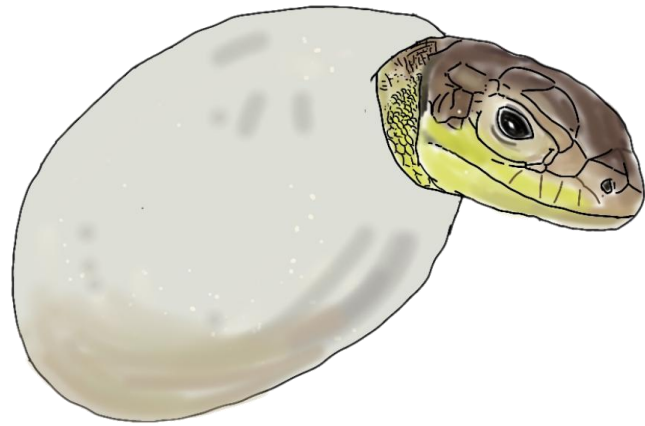


diurno



SERPENTI NEL PARCO 1

RAMARRO OCCIDENTALE



Oviparo: 5-20 uova fino a 2 volte l'anno
in maggio-giugno

cibo

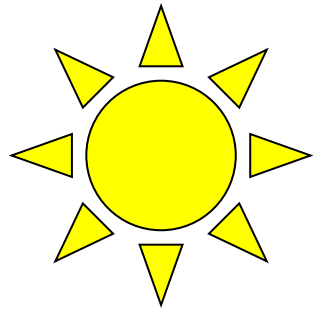


LUCERTOLA MURAIOLA

23 cm



LUCERTOLA MURAIOLA



diurna



LUCERTOLA MURAIOLA

○ Oviparo: 2-6 uova fino a 3 volte l'anno in aprile-luglio



cibo

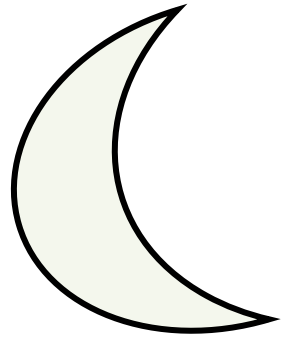


ORBETTINO

35 cm



Perde la coda



notturmo

ORBETTINO

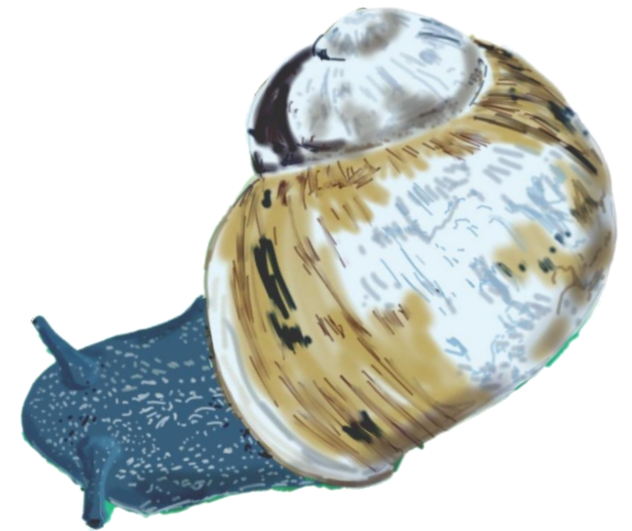
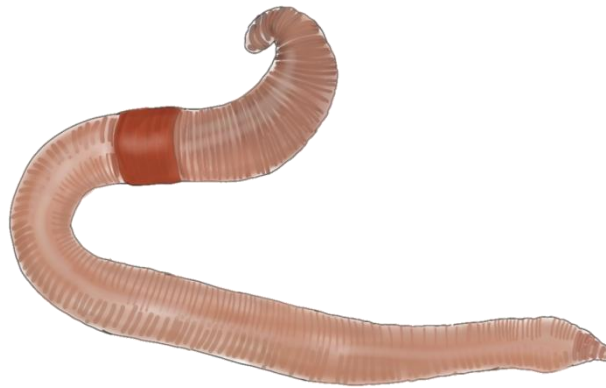


SAURI DEL PARCO PINETA

ORBETTINO



Ovoviviparo: 4-26 piccoli in
settembre-ottobre



cibo

SAURI DEL PARCO PINETA

RETTILI

DEL PARCO PINETA



FOTOGRAFIE: VITTORE ARRIGONI, ALESSANDRO BERLUSCONI, PAOLA CASALE, FLAMINIO SABAINO ,
STEFANO SCALI E ARCHIVIO PARCO;
DISEGNI: LISA BERTE', MATTIA BORDEGONI, PAOLA CASALE, FABIANA FASELI, SELINA GAY, ROKSOLANA
ROHOVS'KA, MIRIANA VIERO