



# Parco Pineta

Il cuore verde della Lombardia



# INSETTI

SECONDA PARTE

# Una vita da libellula

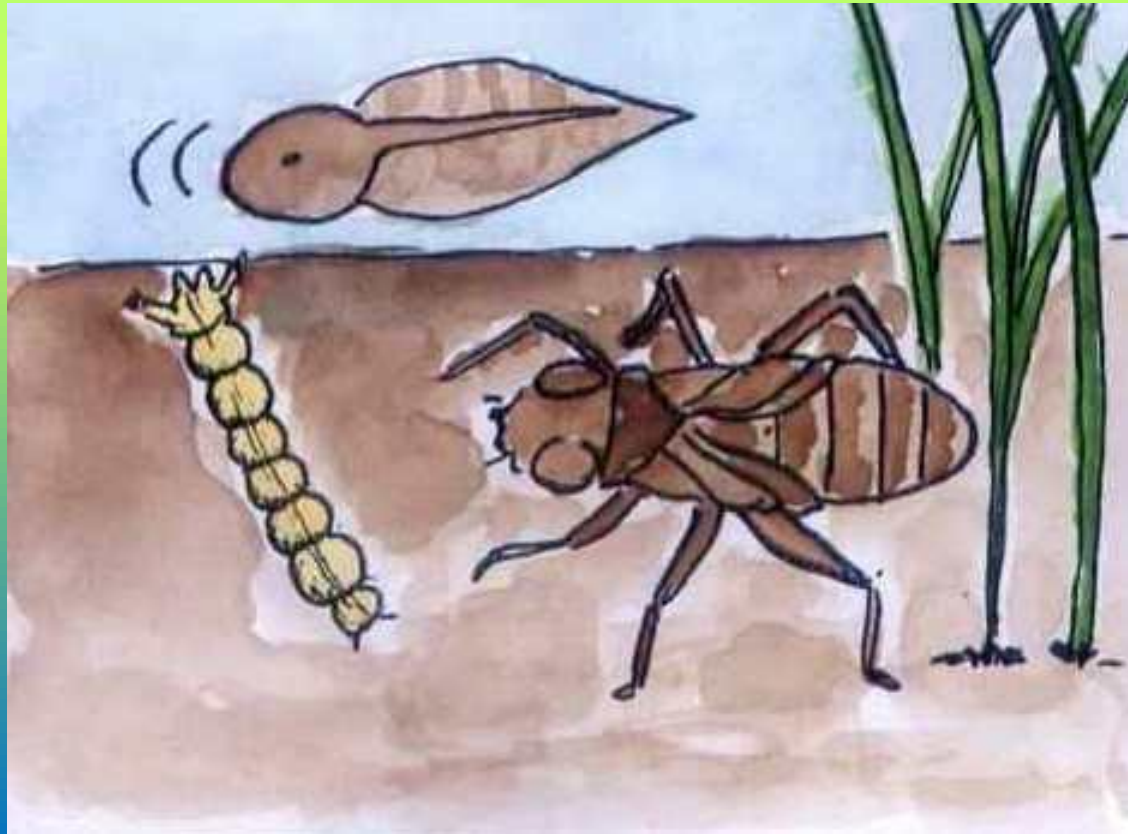
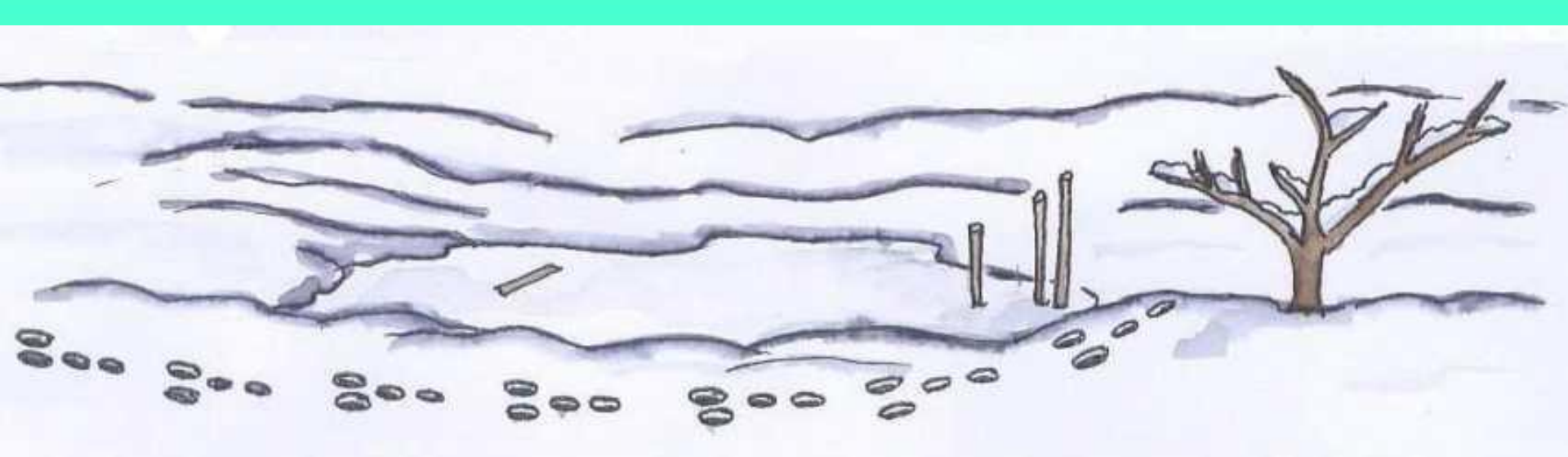


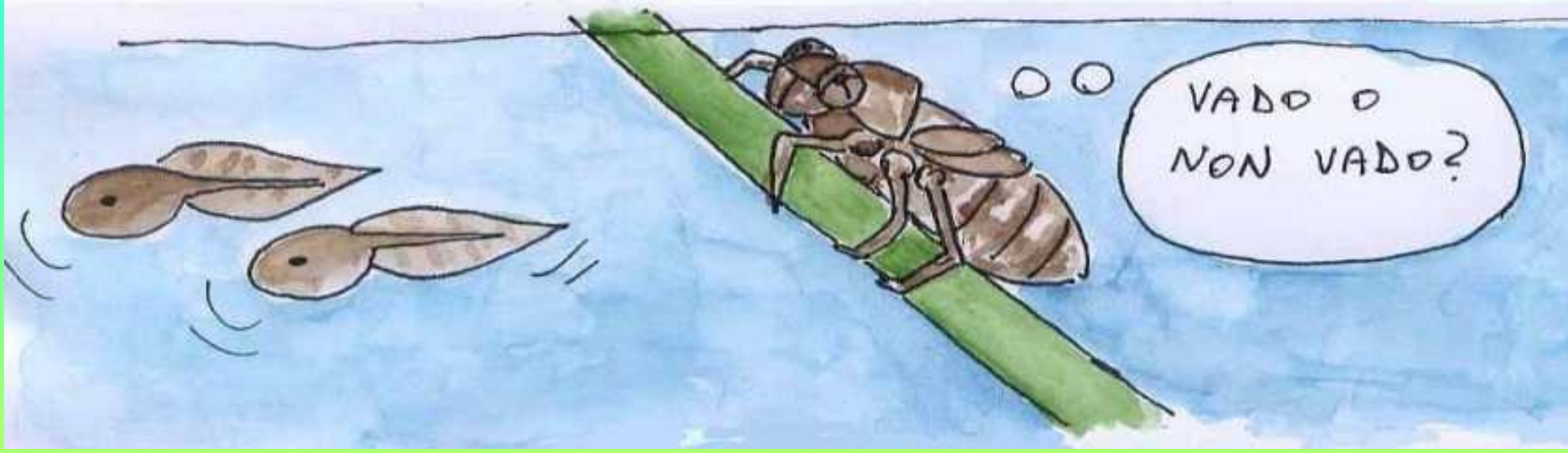
AIUTO!

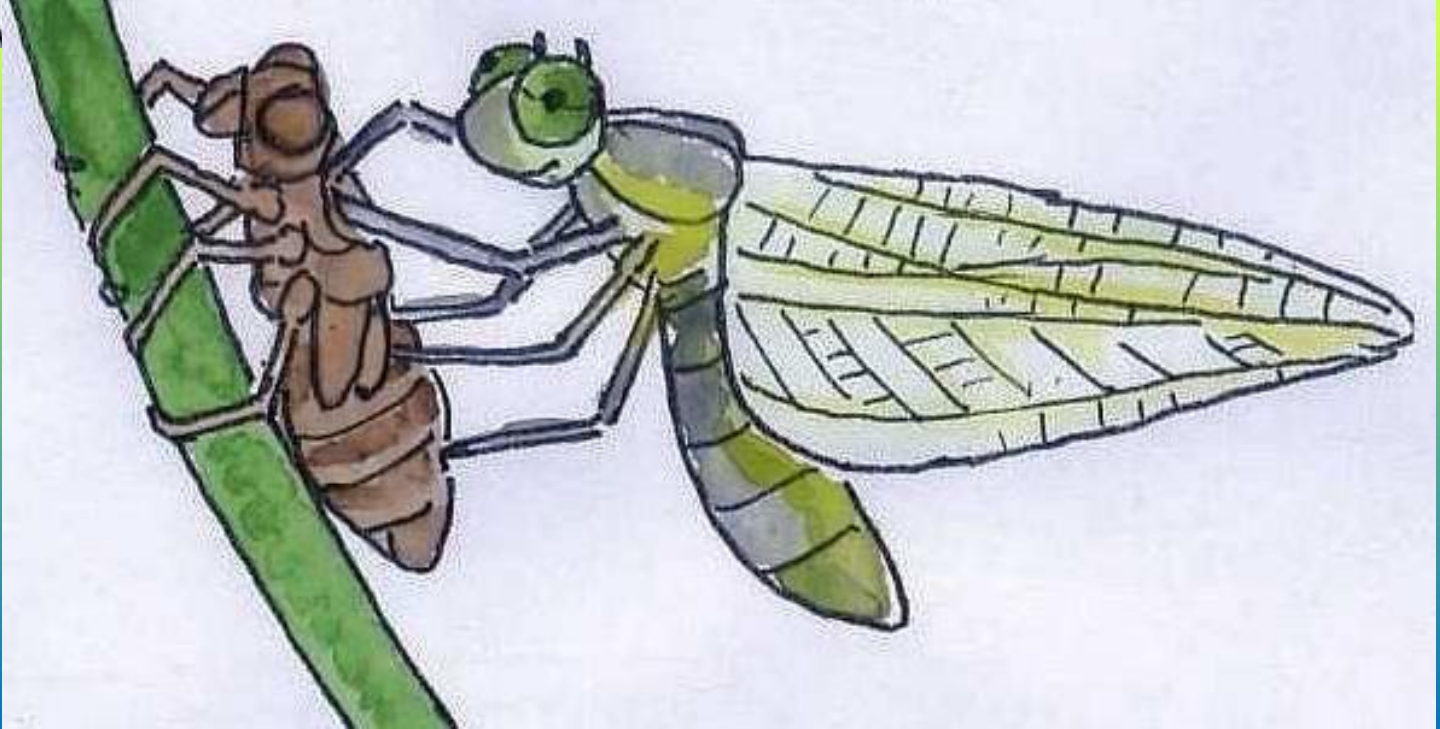
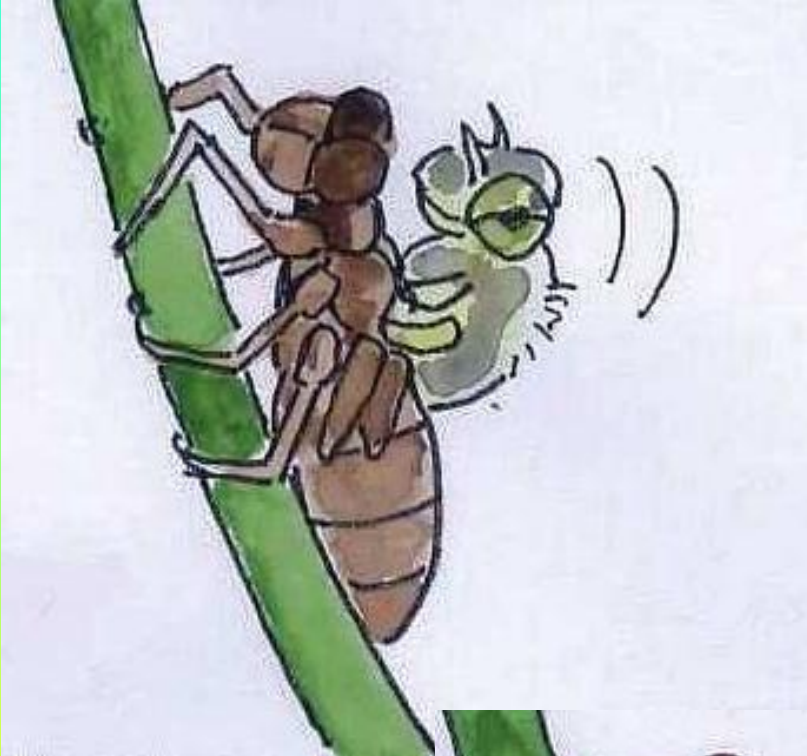
PRESO!



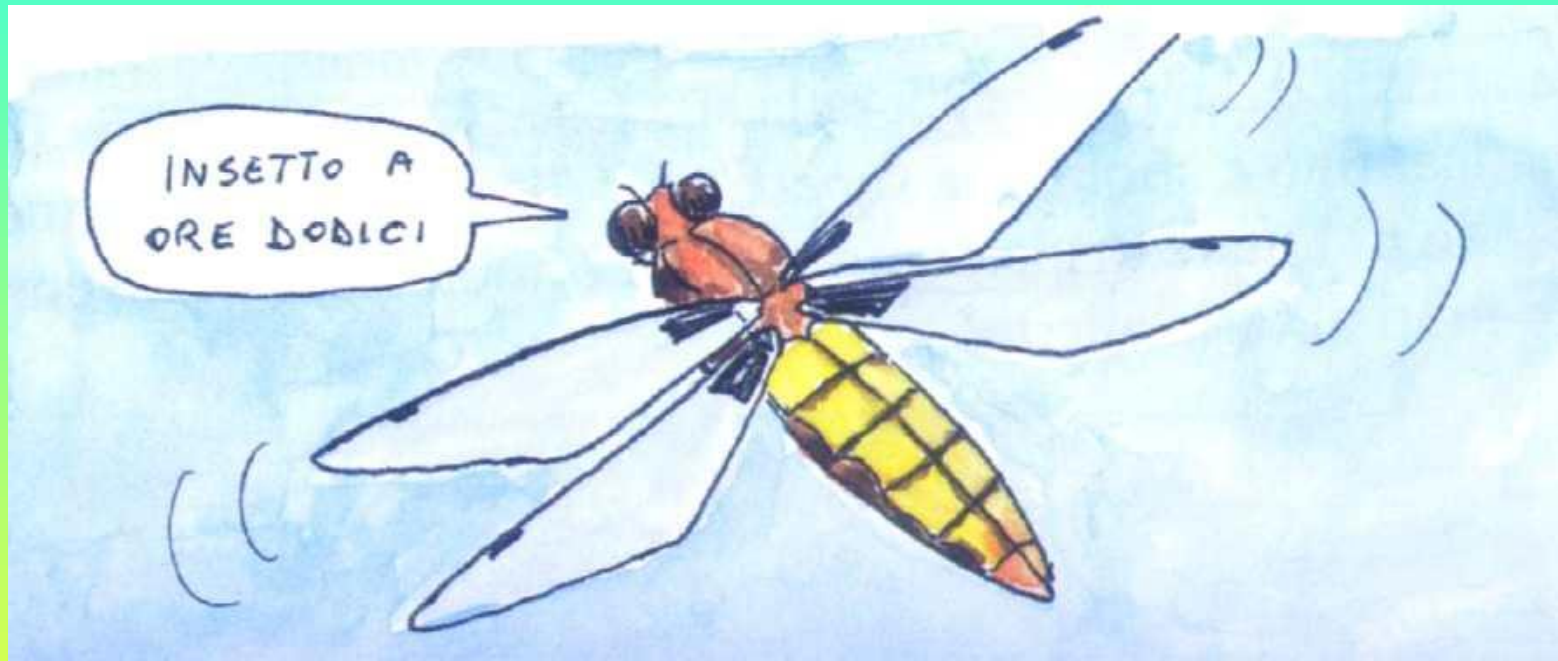


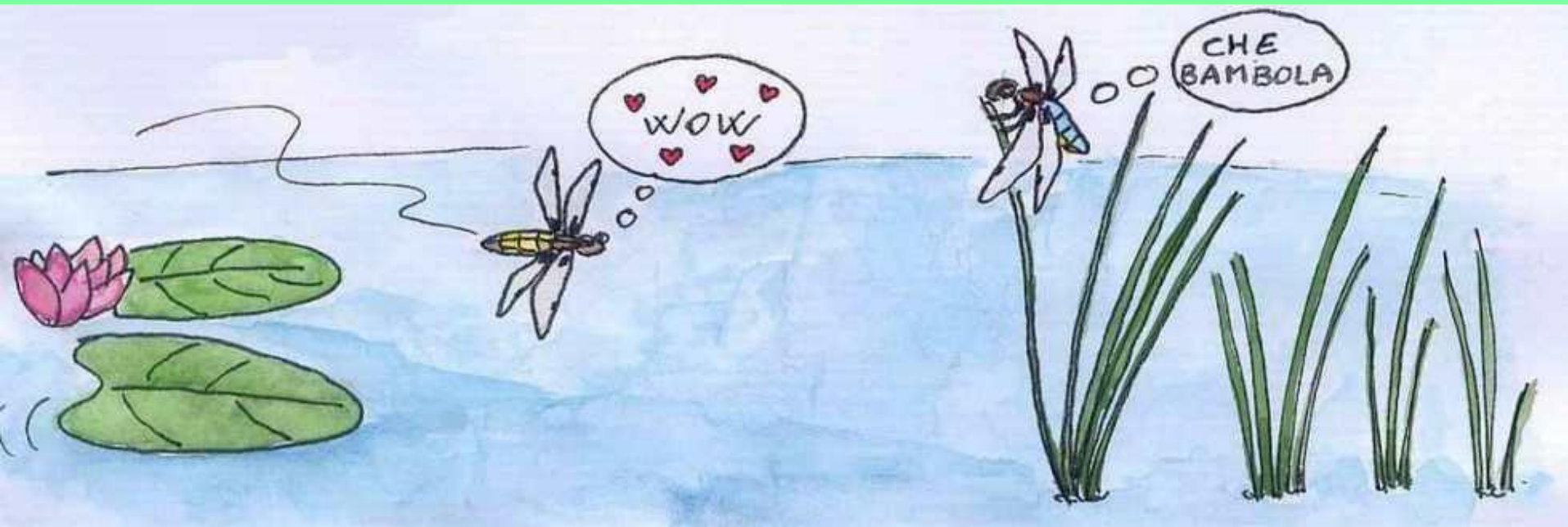








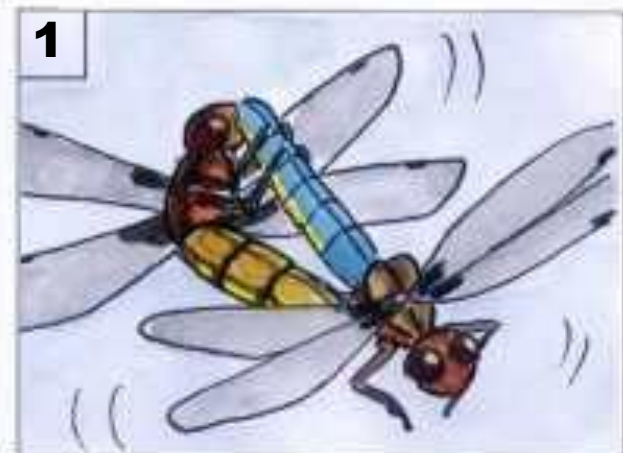
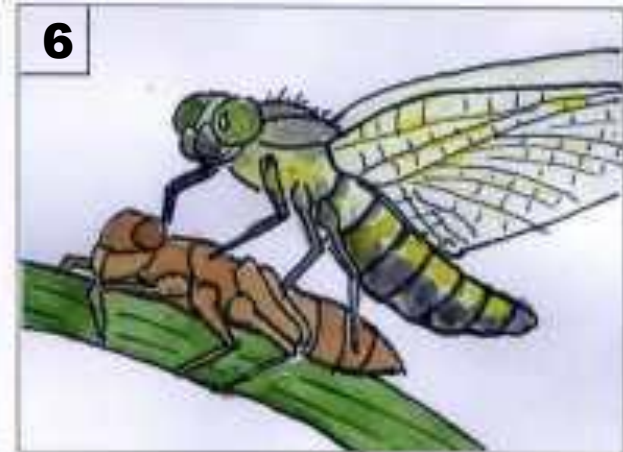




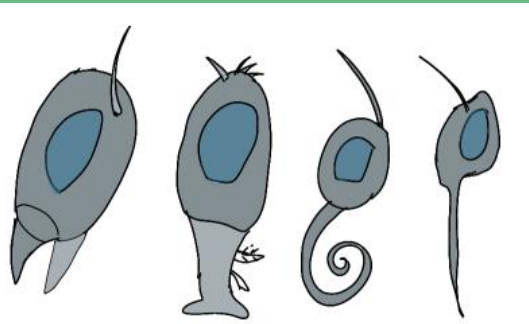
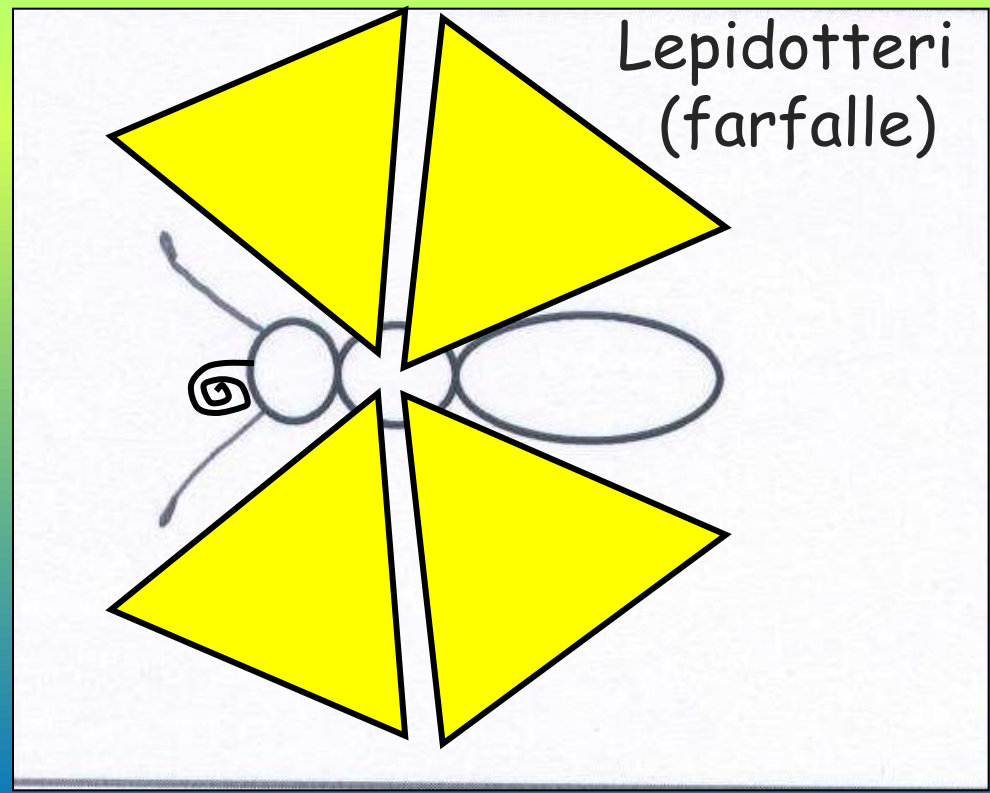
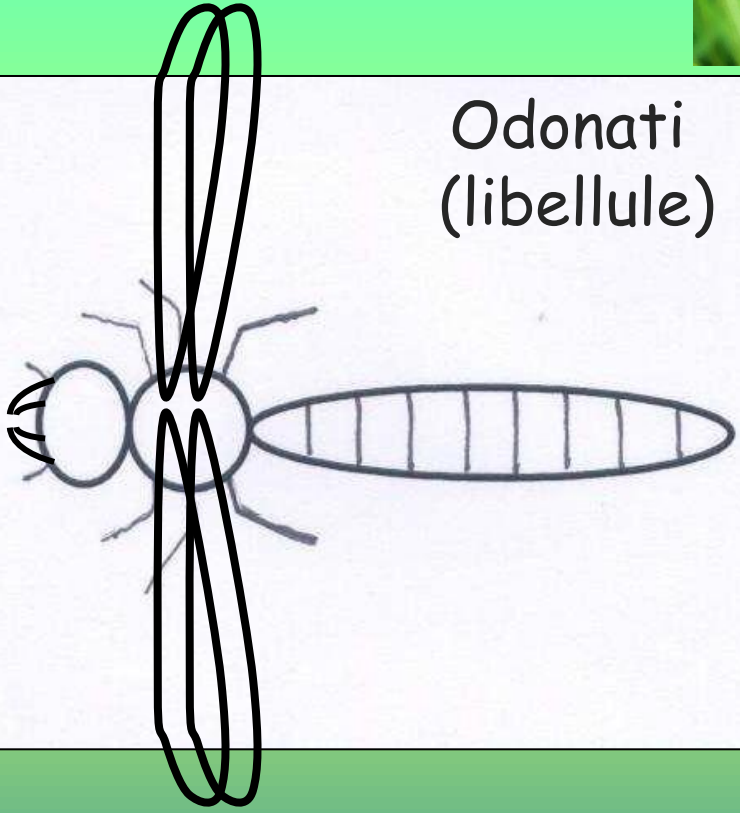
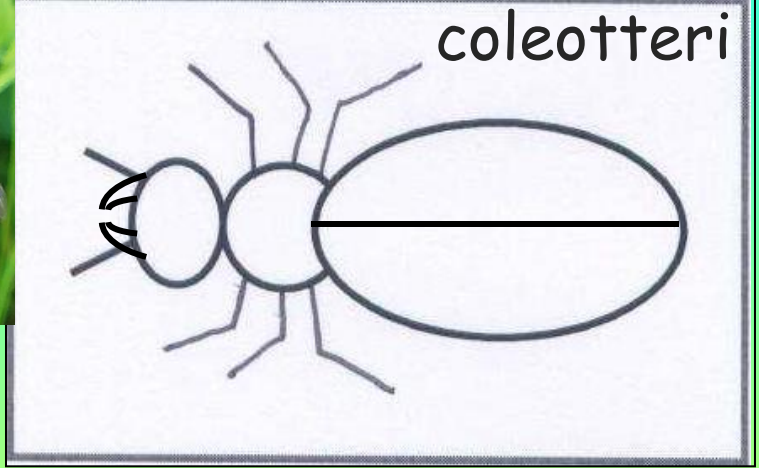


# La vita della libellula

1. Le libellule si accoppiano; 2. La femmina depone le uova in acqua; 3. La larva, nata dall'uovo, caccia sott'acqua le sue prede; 4. La larva esce dall'acqua arrampicandosi sullo stelo di una pianta; 5. Il "guscio" della larva si spacca e ne esce pian piano la libellula; 6. La libellula appena nata asciuga le ali al sole: appena pronta volerà via.

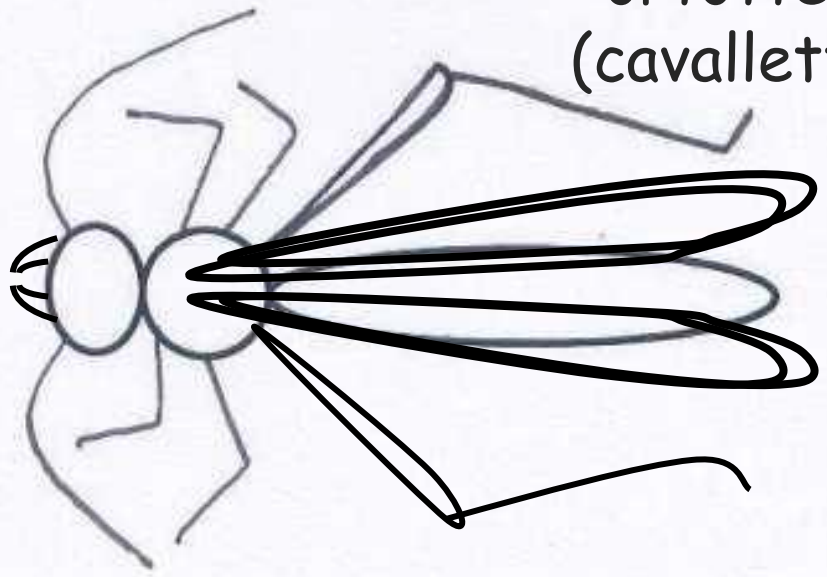


# Riconoscere gli insetti

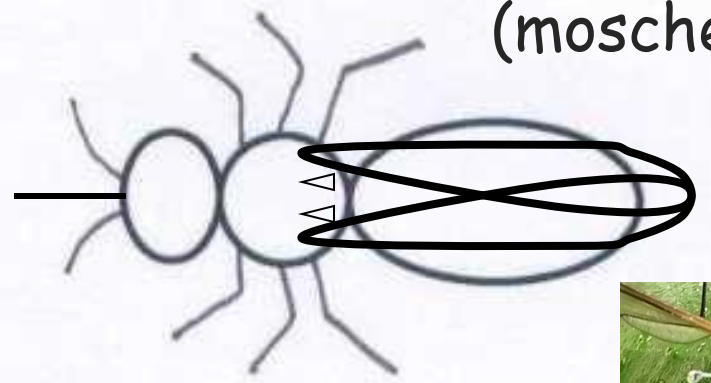


# Riconoscere gli insetti

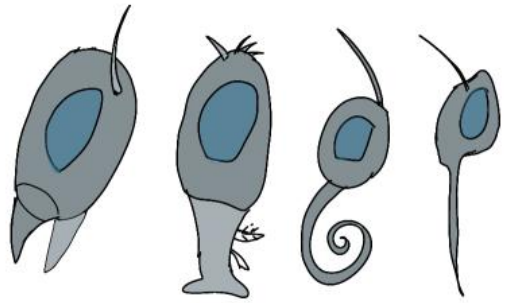
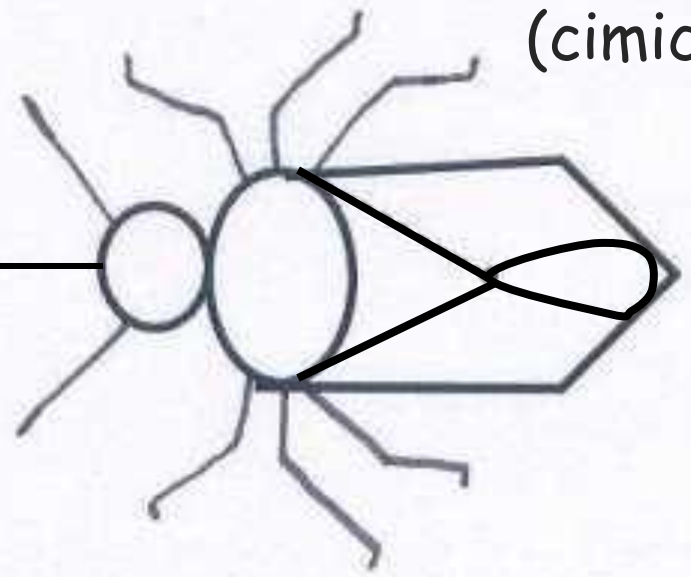
ortotteri  
(cavallette)



ditteri  
(mosche)



emitteri  
(cimici)





# Riconosciamo gli insetti **ODONATI**





Riconosciamo gli insetti

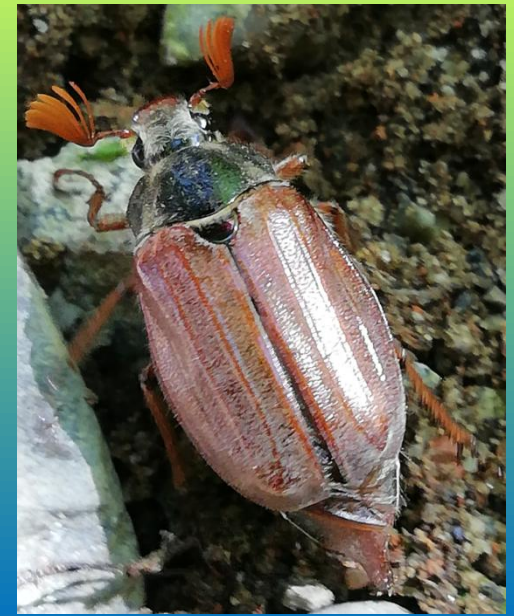
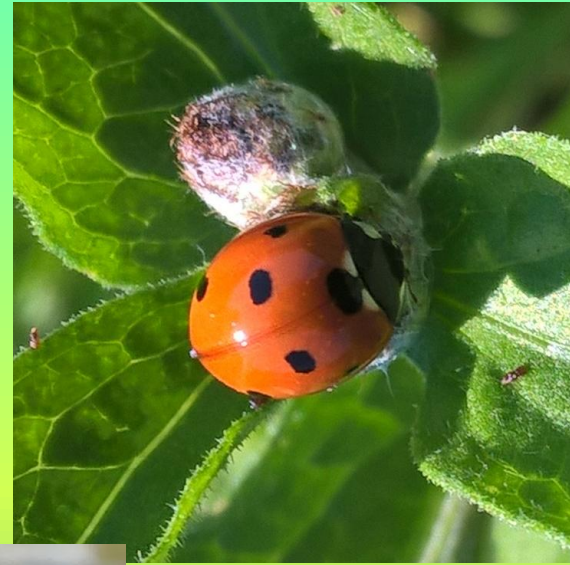
LEPIDOTTERI





# Riconosciamo gli insetti

# COLEOTTERI





# Riconosciamo gli insetti

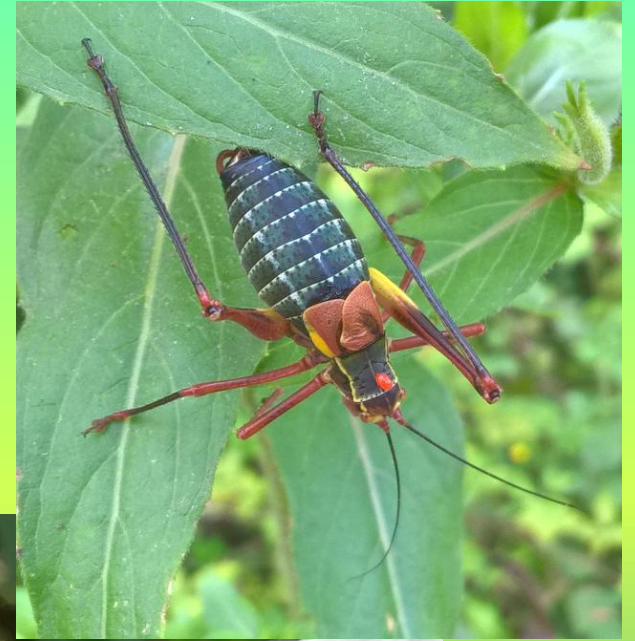
## EMITTERI





# Riconosciamo gli insetti

## ORTOTTERI





# Riconosciamo gli insetti

# DITTERI



tipula



Sembra un'ape ma  
è una mosca